

# GUR

Good University Report

# 2019



Suan Sunandha Rajabhat University

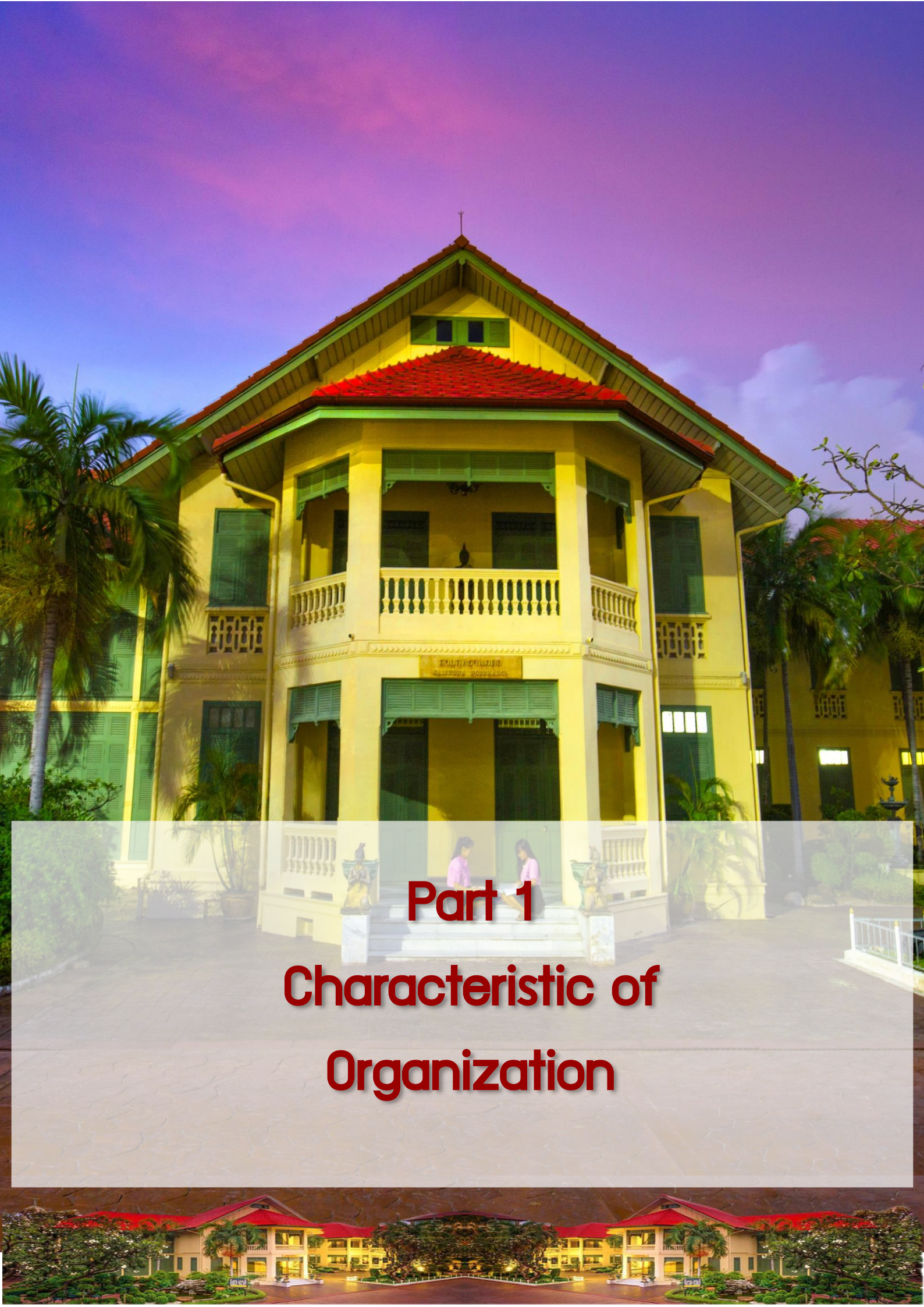


# Contents

<b>Part 1 Characteristic of Organization</b>	<b>1</b>
1.1 History	2
1.2 Educational Areas	3
1.3 Curriculums	4
1.4 Students	5
1.5 Staffs	5
1.6 Classrooms/Laboratories	6
<b>Part 2 Leading the Organization with Vision</b>	<b>9</b>
2.1 SSRU Roadmap 2030	10
2.2 Strategies and Agenda Projects	10
2.3 Monitoring the Performances of University	11
2.4 Executives	12
2.4.1 University Level	12
2.4.2 Agency Level	12
<b>Part 3 Performances and Results</b>	<b>15</b>
3.1 Educational Arrangements	16
3.1.1 Teaching and Learning Innovation	16
3.1.2 International Students/Exchange Students	17
3.1.3 International University Network	17
3.1.4 Bachelor's Degree Applicants	17
3.1.5 Employment of Graduates	18
3.1.6 Result of license exam	18
3.1.7 Award Receiving of Students and Alumni	19
3.1.8 Student researches that were presented at Mini-conference	19
3.1.9 The Study Continuation of Grade 12 Students	20
3.2 Researches	20
3.2.1 University Journals in TCI Database	20
3.2.2 Published Researches	21
3.2.3 Research Budget	21
3.2.4 Quality Level of Published Researches to Permanent Lecturers	21

3.2.5 Research Utility	21
3.2.6 Patent Registration	22
3.3 Rajabhat University Strategy	23
3.3.1 Rajabhat University Strategic Project for Local Development	23
3.3.2 New knowledge at the academic resources	24
3.4 Arts and Cultural Conservation	25
3.4.1 Princess SaisavaliBhiromya Exhibition Hall and 3 Art Museums	25
3.4.2 Arts and Cultural Conservation Projects	26
3.5 Administration	27
3.5.1 Higher Education Projects	27
3.5.2 Career Paths	27
3.5.3 Staff Happiness	28
3.5.4 Landscape and Environmental Improvement	28
3.5.5 Identity of Suan Sunandha	29
3.5.6 Organizational Communication	30
3.5.7 English Potentiality Development for Staff	30
3.5.8 Knowledge Utility	31
3.5.9 Result of Internal Education Quality Assessment	32
3.5.10 Result of the 4th Round of External Quality Assessment in the Higher Education	33
3.5.11 Integrity and Transparency Assessment of Government Agencies	33
3.5.12 Result of University Rankings	34
3.5.13 Result of Annual Government Statement of Expenditure Disbursement	34
3.5.14 The Development Result of Educational Service Center	35



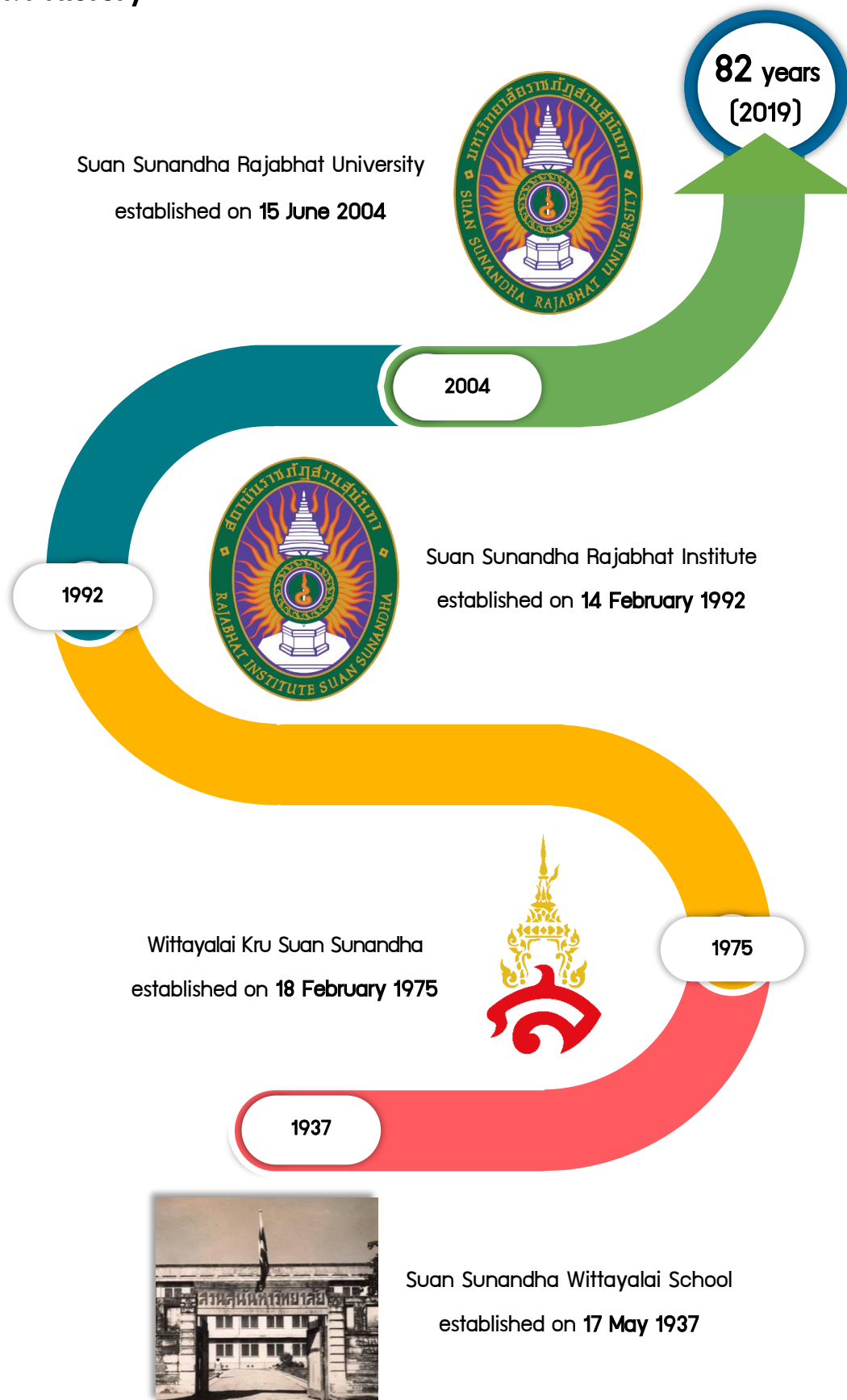


## Part 1

# Characteristic of Organization



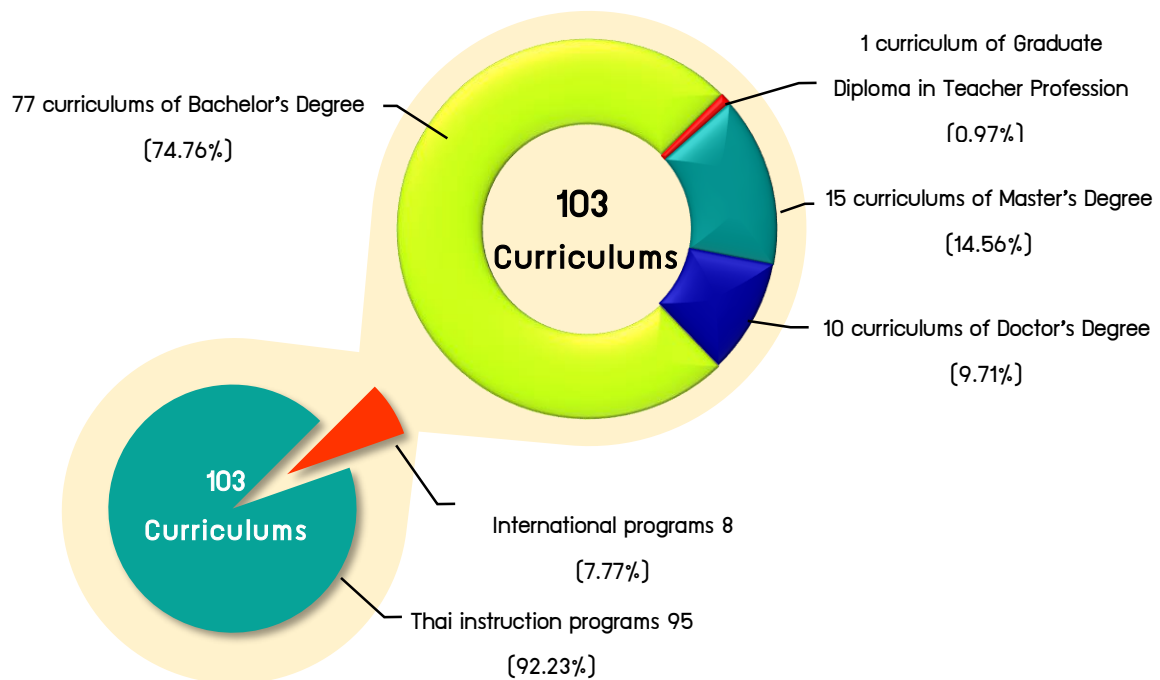
## 1.1 History



## 1.2 Educational Areas



### 1.3 Curriculums



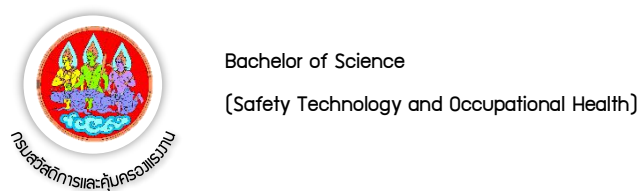
Source : Office of the President, Academic Services Division

Data : Educational Year 2018, July 2019

#### Curriculums with the Professional Certificate After Testing



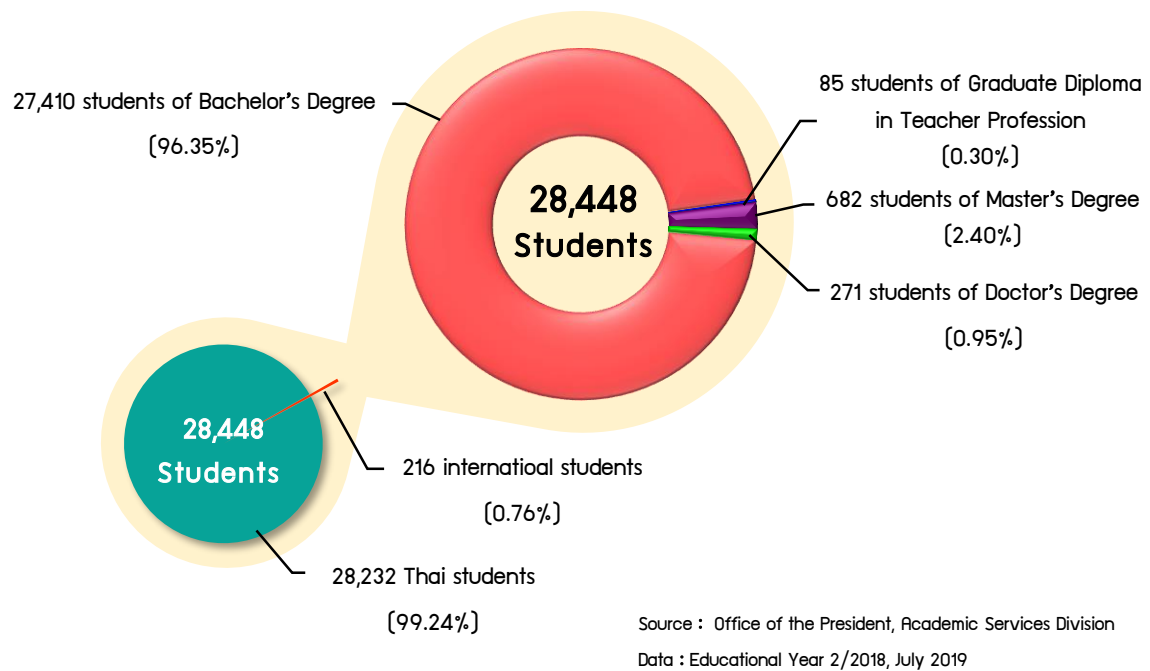
#### The curriculum which was certified by the Department of Labour Protection and Welfare



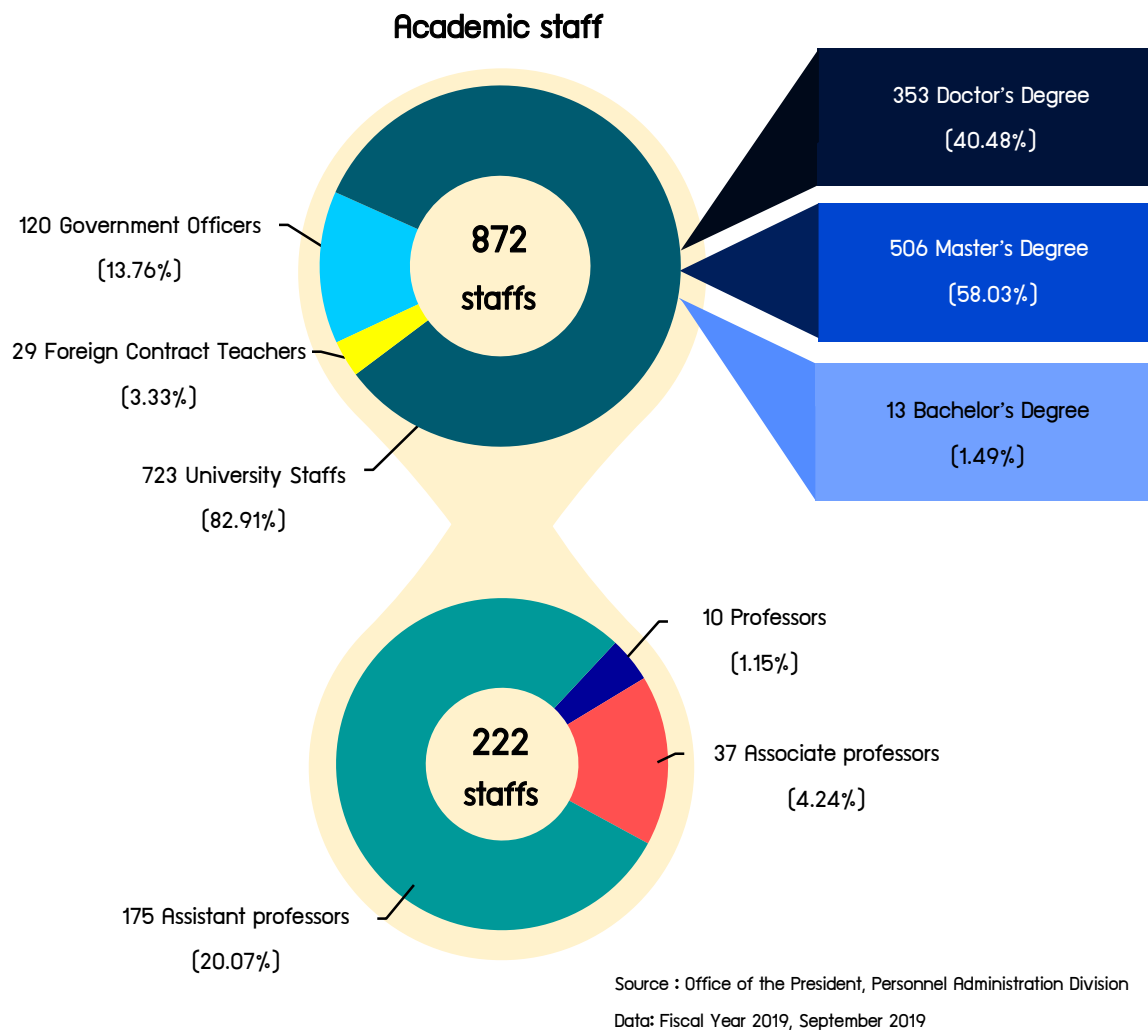
Source : Academic Services Division, Faculty of Industrial Technology

Data : Educational Year 2018, July 2019

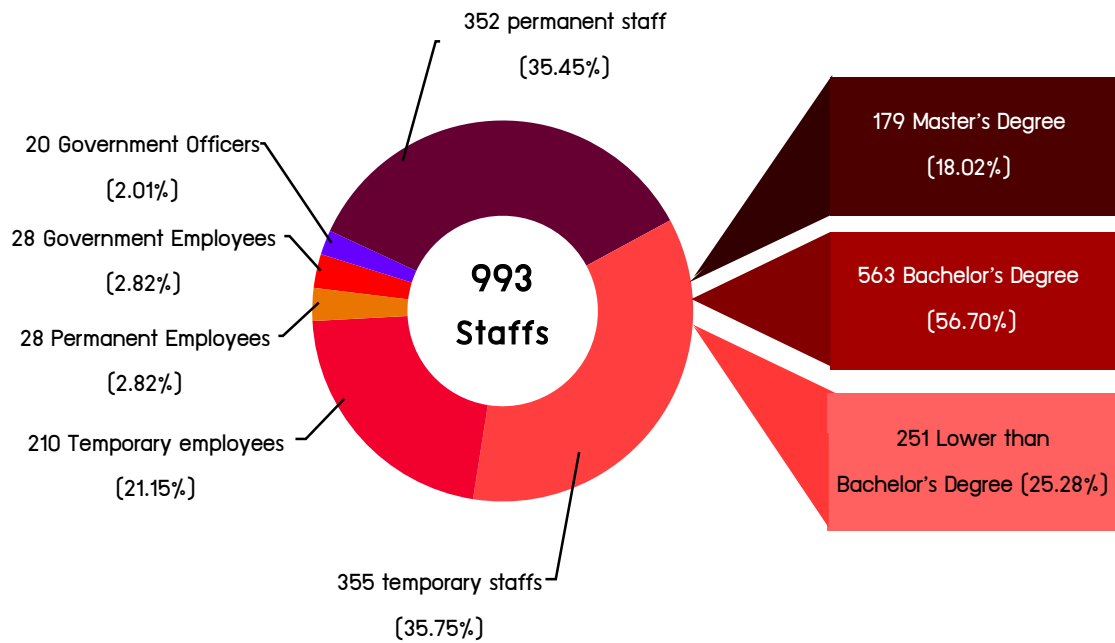
## 1.4 Students



## 1.5 Staff



## Support Staff



Source : Office of the President, Personnel Administration Division  
Data: Fiscal Year 2019, September 2019

## 1.6 Classrooms/Laboratories





## 198 Laboratory



Traditional Chinese Medicine  
Clinical Laboratory



Thai Traditional  
Medicine Laboratory



Nursing Laboratory



Biology Laboratory



Science Laboratory



Electrical and Electronic  
Laboratory



Architecture Laboratory



Kitchen Laboratory



Logistics Laboratory



Post-Production  
Laboratory



Computer Laboratory



Photograph Laboratory



Theatre



Radio Broadcasting  
Laboratory



Food Laboratory



SSRUIC BISTRO



Lodging Laboratory



Aviation Laboratory



Smart Classroom



Judgement's Simulation  
Room





# ROAD MAP 2030

To International Niche Guru University

มหาวิทยาลัยราชภัฏสวนสุนันทา

**1**

จัดอันดับโดย Webometrics ประเทศสเปน

QS STARS  
RATED FOR EXCELLENCE

QS STARS  
RATED FOR EXCELLENCE

QS STARS  
RATED FOR EXCELLENCE

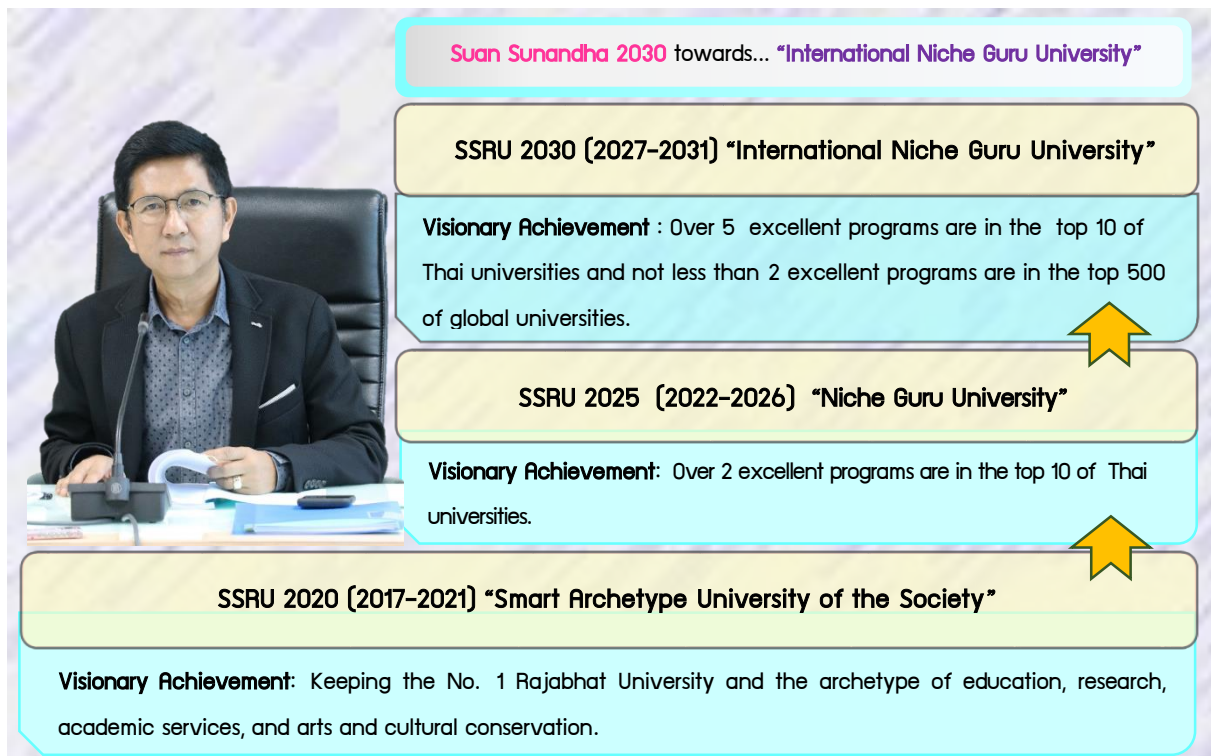


## Part 2

### Leading the Organization With Vision



## 2.1 SSRU Roadmap 2030



## 2.2 Strategies and Agenda Projects



## 2.3 Monitoring the Performances of University



**Mr. Korn Dabbaransi**  
Chairman of University Council



**Assoc. Prof. Dr. Luedeck Girdwichai**  
President of Academic Council  
President of Board of University  
Administration



**Miss Pornpimol Ratanipitak**  
President of Borad of University Monitoring  
and Evaluation



**Asst. Prof. Weera Chotithammaporn**  
President of  
Council of Lecturer and Government  
Officer



**Mr. Somchai Atsavaserenee**  
President of  
Board of University Affairs

## 2.4 Executives

### 2.4.1 University Level

Assoc. Prof. Dr. Luedech Girdwichai

Assoc. Prof. Dr. Chutikarn Sriviboon

Assoc. Prof. Dr. Somdech Rungsisawat

Assoc. Prof. Dr. Witthaya Mekhum

Asst. Prof. Dr. Chananart Minanandana

Assoc. Prof. Dr. Thanasuwit Thabhiranrak

Asst. Prof. Dr. Sittichai Thammasane

Asst. Prof. Siri-orn Champatong

Ms. Napasri Suwanajote

Ms. Duangphon Saengthong

President of Academic Council

Vice President for Administration

Vice President for Academic Affairs

Vice President for Planning and Quality Assurance

Vice President for Student Affairs

Vice President for Research and Development

Assistant to the President for Academic Affairs

Assistant to the President for Student Affairs

Assistant to the President for International Affairs

Assistant to the President for Assets and Income

### 2.4.2 ระดับหน่วยงาน

Assoc. Prof. Dr. Nantiya Noichun

Asst. Prof. Dr. Anat Thapinta

Asst. Prof. Dr. Nipon Sasithornsawapa

Asst. Prof. Dr. Prateep Wajeetongratana

Asst. Prof. Dr. Palang Wongtanaporn

Asst. Prof. Dr. Chutima Maneewattana

Asst. Prof. Dr. Duangsamorn Rungsawanpho

Asst. Prof. Dr. Krongthong Khairree

Asst. Prof. Dr. Bundit Pungnirund

Asst. Prof. Dr. Ponpun Vorasiha

Assoc. Prof. Dr. Thavatchai Kamoltham

Dr. Niracharapa Tongdhamachart

Asst. Prof. Dr. Komson Sommanawat

Asst. Prof. Dr. Somboon Vess

Assoc. Prof. Dr. Somkiat Korbuakaew

Asst. Prof. Dr. Komon Paisal

Asst. Prof. Dr. Suwaree Yordchim

Asst. Prof. Dr. Sirilak Ketchaya

Dean of Faculty of Education

Dean of Faculty of Science and Technology

Dean of Faculty of Humanities and Social Sciences

Dean of Faculty of Management Science

Dean of Faculty of Industrial Technology

Dean of Faculty of Fine and Applied Arts

Dean of Graduate School

Dean of International College

Dean of College of Innovation and Management

Dean of College of Nursing and Health

Dean of College of Allied Health Sciences

Dean of Suan Sunandha International School of Art

Dean of College of Logistics and Supply Chain

Dean of College of Architecture

Director of SSRU Demonstration School

Director of the Office of the President

Director of the Institute of Research and Development

Director of Academic Resource and Information Technology

Asst. Prof. Dr. Preecha Pongpeng	Director of the Office of General Education and Innovative Electronic Learning
Mr. Anantachai Aeka	Director of the Office of Arts and Culture
Asst. Prof. Dr. Kevin Wongleedee	Director of Institute of Lifelong Learning Promotion and Creativity
Mr. Tawatchai Suphan	Director of Assets and Income Bureau
Asst. Prof. Dr. Komsan Somanawat	Acting Director of Nakhon Pathom Education Center
Asst. Prof. Dr. Pimporn Thongmuang	Director of Samut Songkhram Education Center
Mr. Supamit Srisawat	Director of Udon Thani Education Center







## Part 3

# Performance and Results





## 3.1 Educational Arrangements

### 3.1.1 Teaching and Learning Innovation

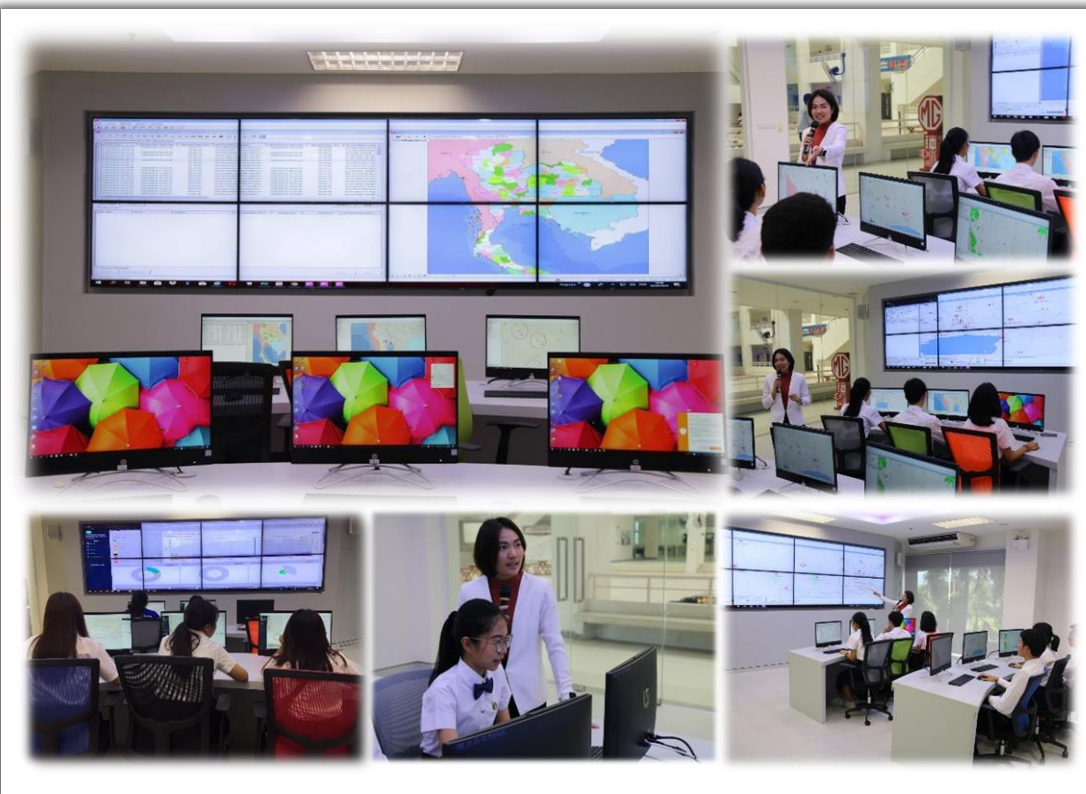
#### Smart Classroom



#### PLC & Active learning



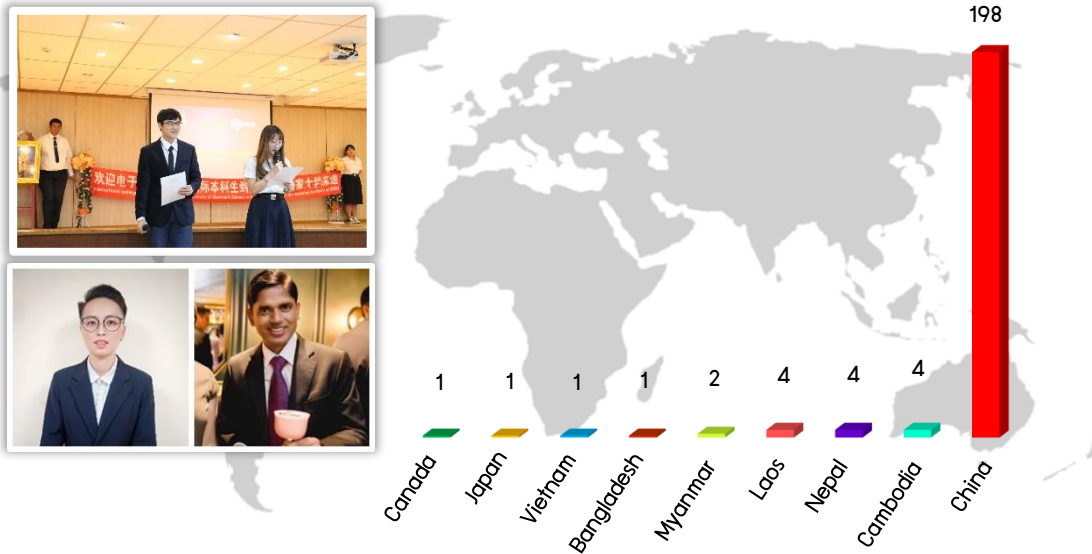
#### Virtual Logistics Laboratory



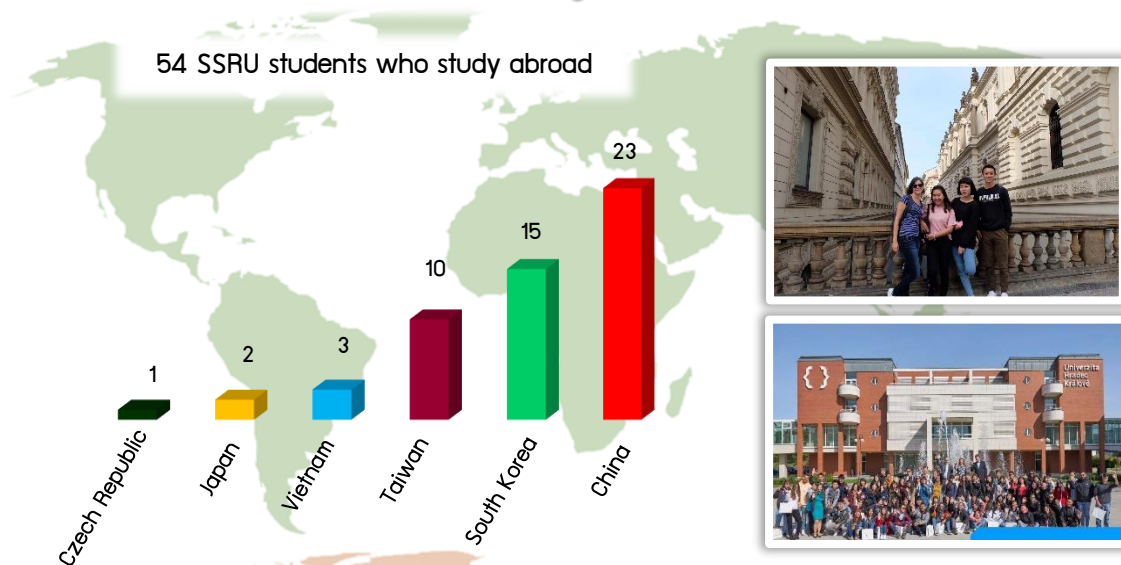


### 3.1.2 International Students/Exchange Students

216 international students

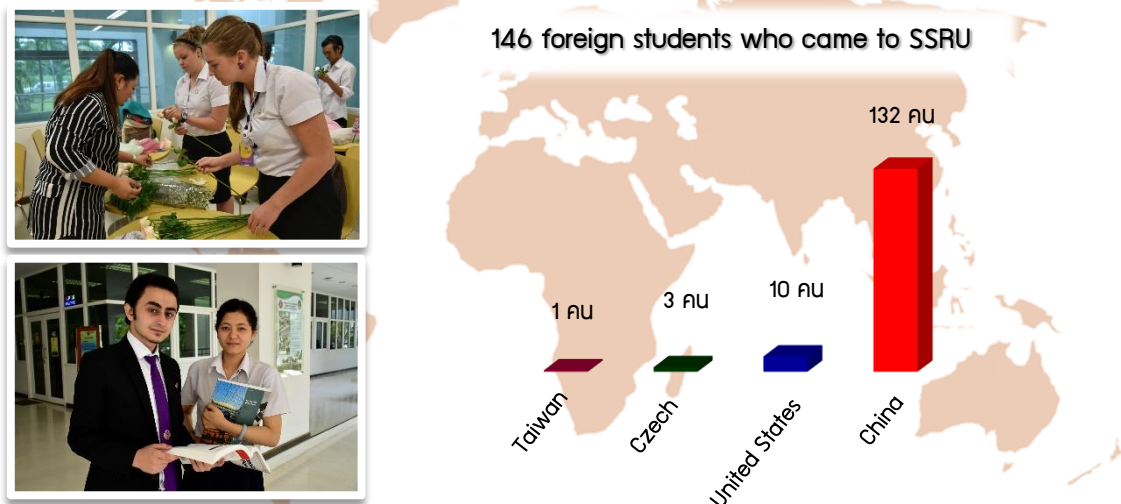


200 exchange students



54 SSRU students who study abroad

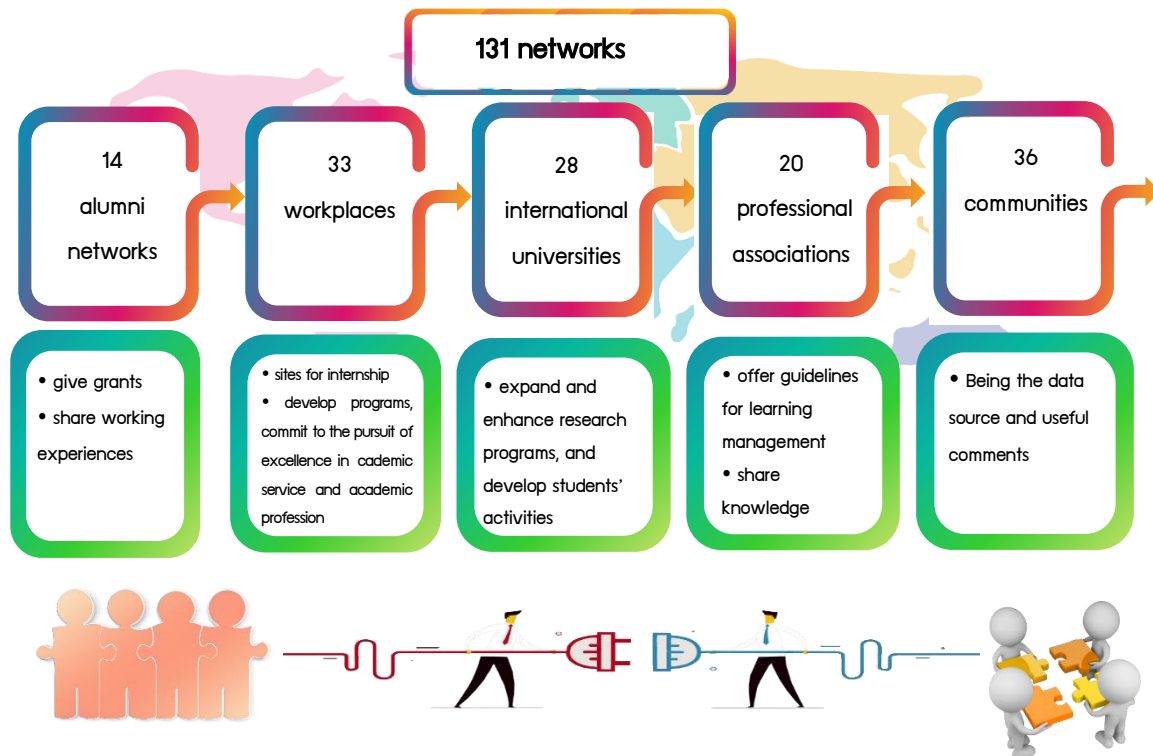
146 foreign students who came to SSRU



Source : Office of the President, Academic Services Division

Data : Educational Year 2018, July 2019

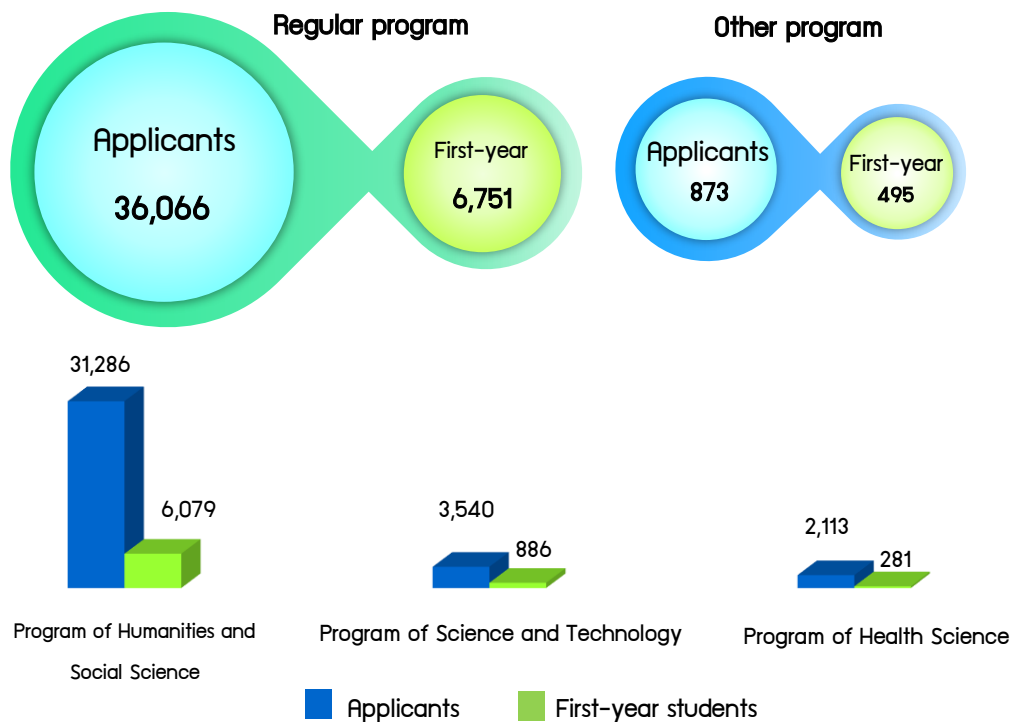
### 3.1.3 University Cooperation Networks



Source : Students' Affairs Division, Office of the President

Data : Fiscal Year 2019, September 2019

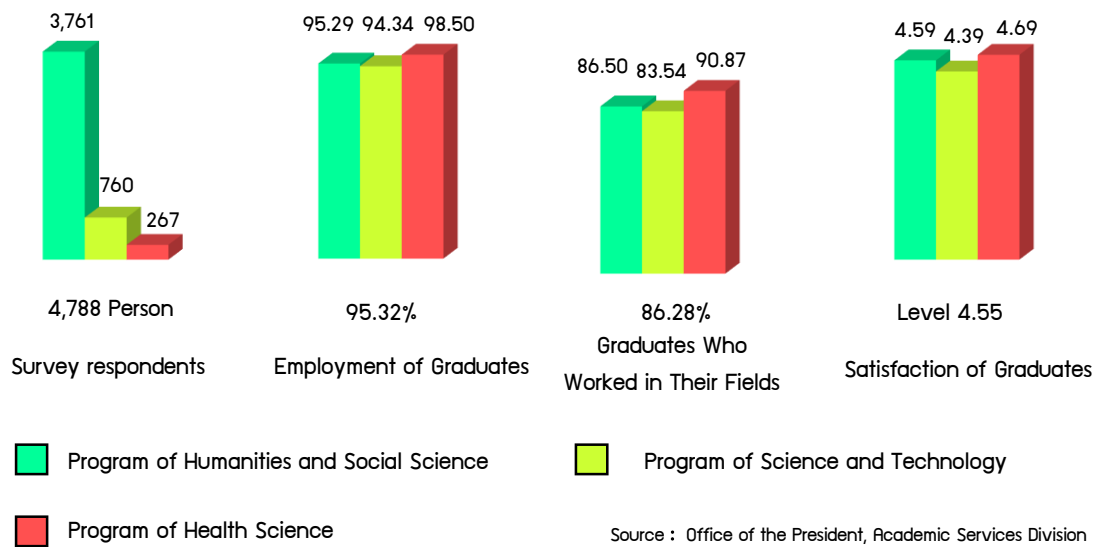
### 3.1.4 Undergraduate Applicants



Source : Office of the President, Academic Services Division

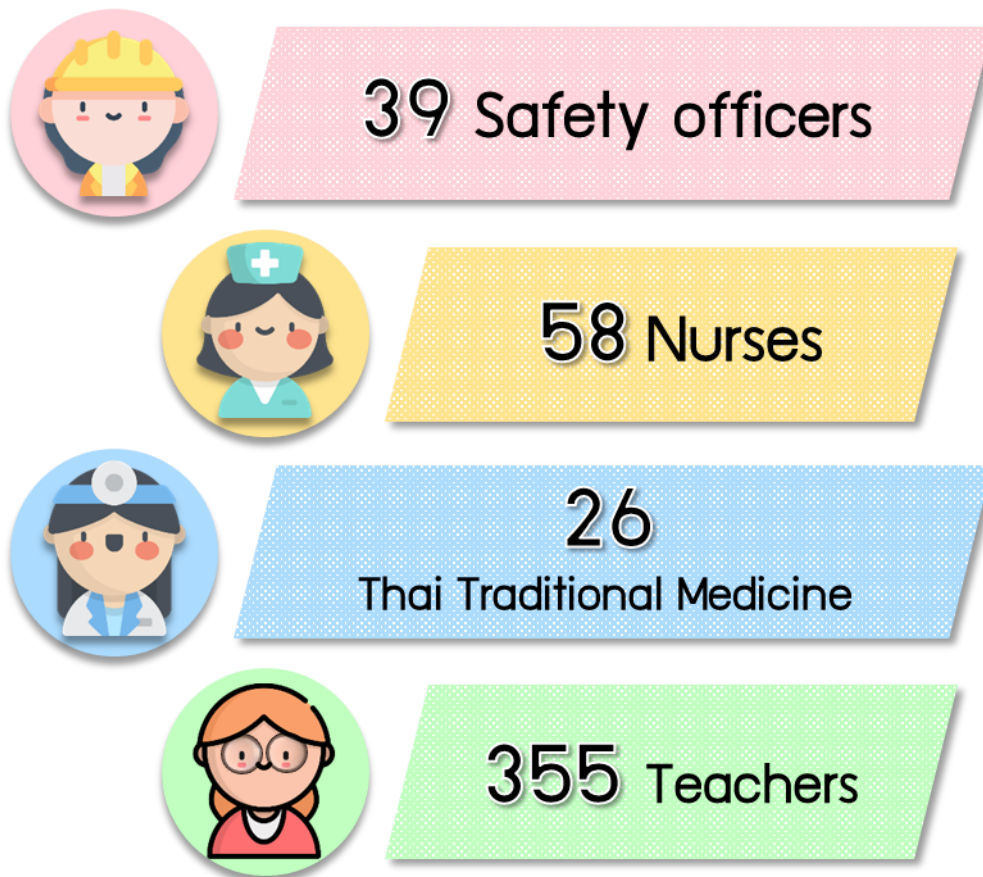
Data : Educational Year 2018, July 2019

### 3.1.5 Employment of graduates



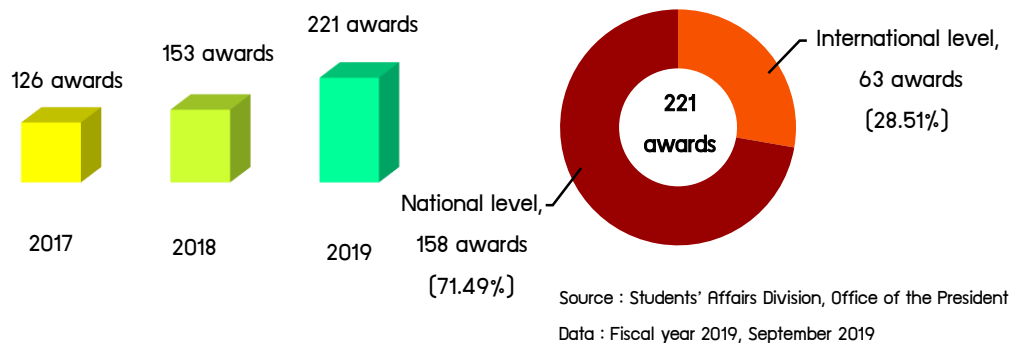
Source : Office of the President, Academic Services Division  
Data : Educational Year 2018, July 2019

### 3.1.6 Graduates with professional licenses

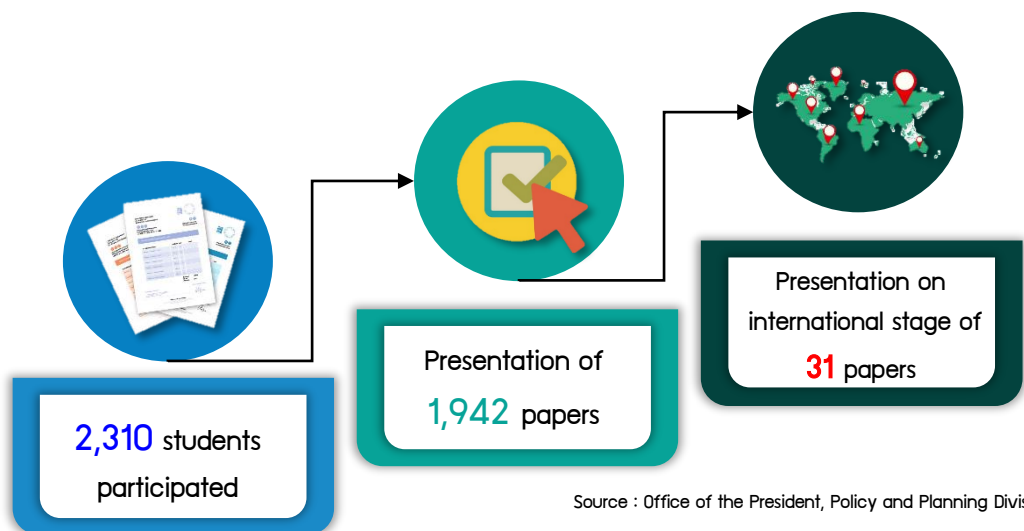


Source : Faculty/College  
Data : Educational Year 2018, July 2019

### 3.1.7 Award Receiving of Students and Alumni

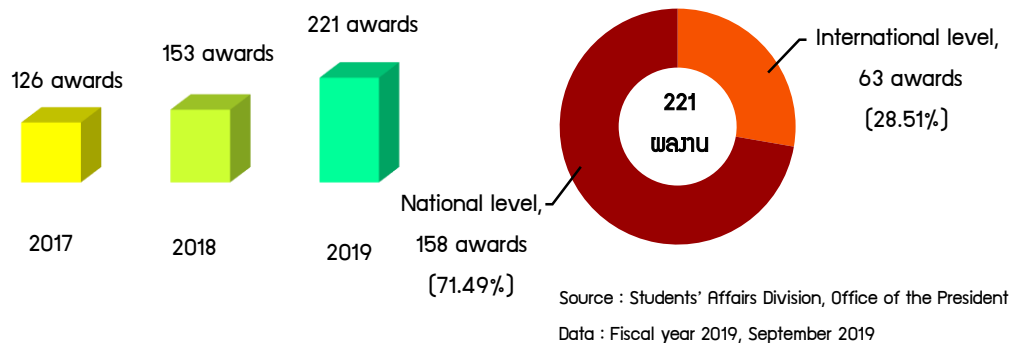


### 3.1.8 Student researches that were presented at Mini-conference

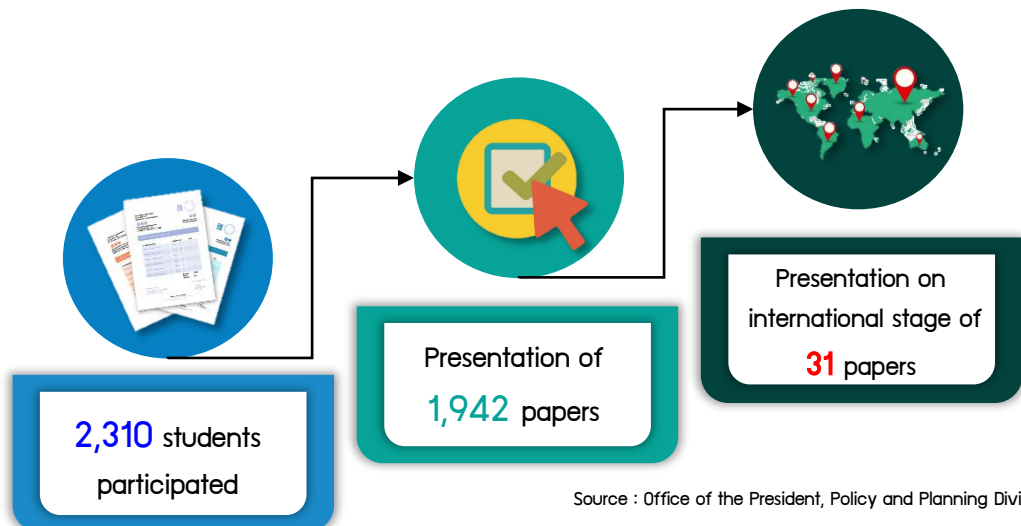




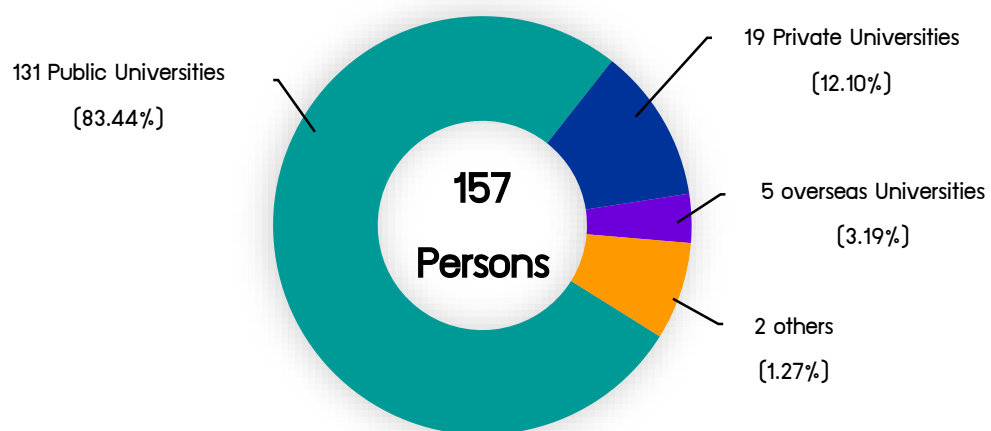
### 3.1.7 Award Receiving of Students and Alumni



### 3.1.8 Student researches that were presented at Mini-conference



### 3.1.9 The Continuation Study of Grade 12 Students



Source : SSRU Demonstration School

Data : Educational Year 2018, July 2019

## 3.2 Researches

### 3.2.1 University Journals in Thailand citation index (TCI) and Asean citation index (ACI) Database

#### Group 1



#### Group 2

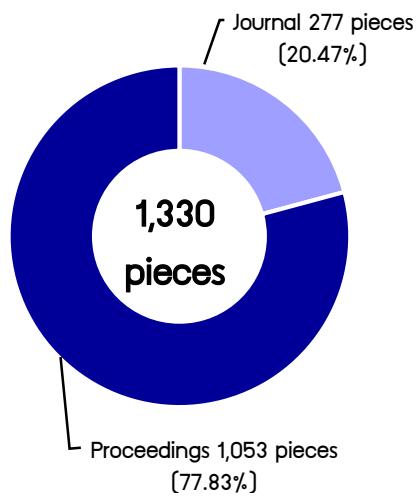


Thailand citation index (TCI) Database Thailand citation index (TCI) and Asean citation index (ACI) Database

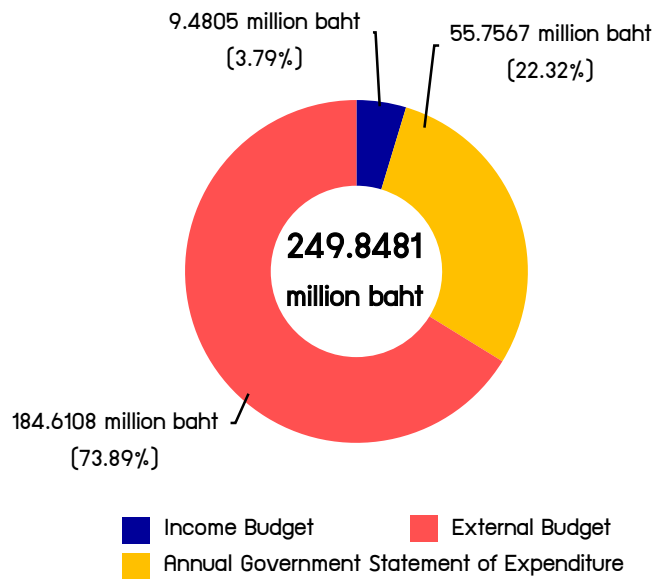
Source : Institute of Research and Development

Data : Fiscal Year 2019, September 2019

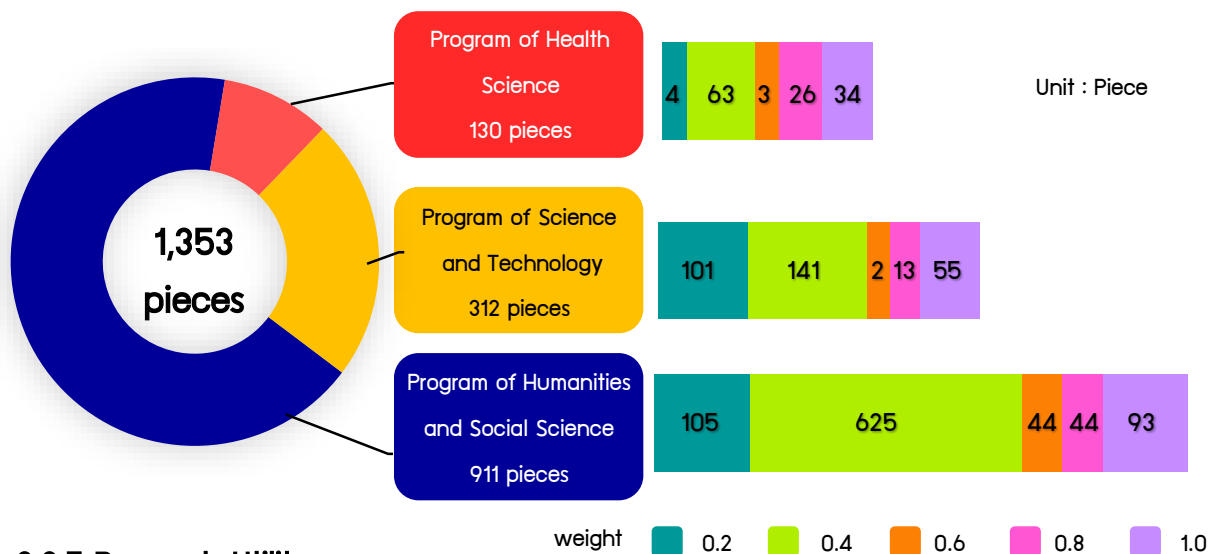
### 3.2.2 Published Researches



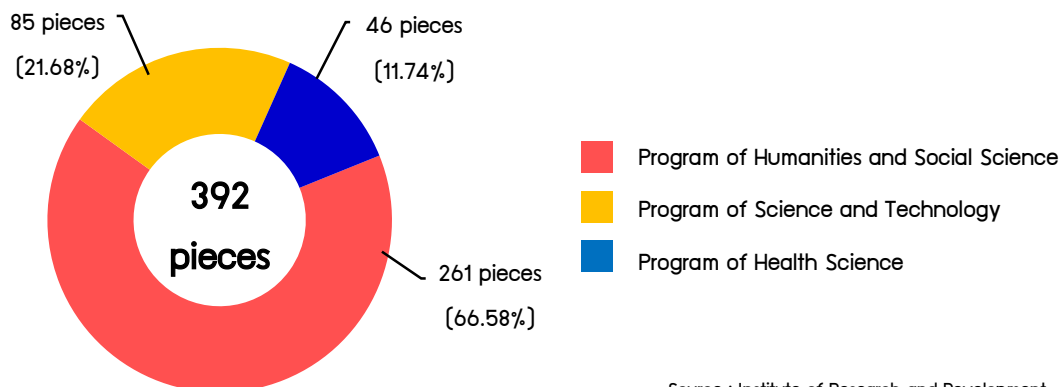
### 3.2.3. Research Budget



### 3.2.4 Quality Level of Published Research to Permanent Lecturers

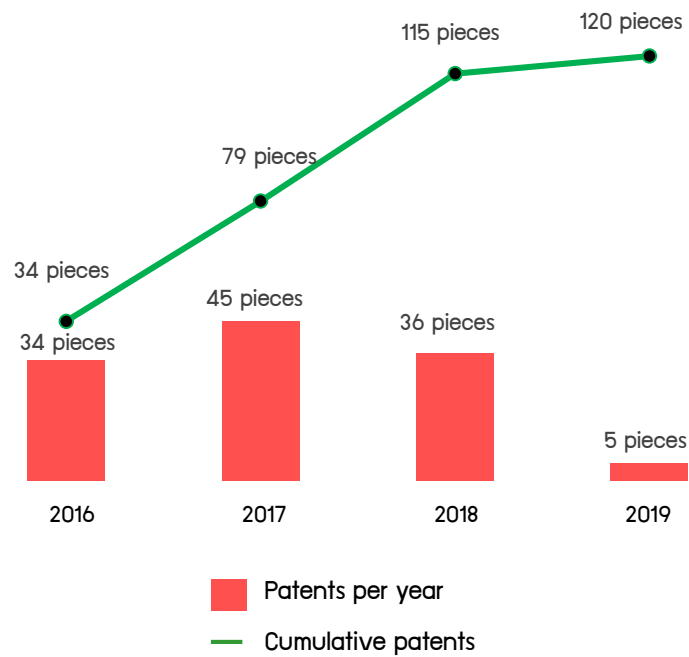


### 3.2.5 Research Utility

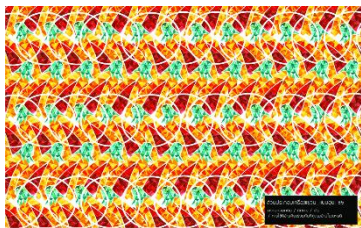


Source : Institute of Research and Development  
Data : Fiscal Year 2019, September 2019

### 3.2.6 Patent



#### Patents in 2019



Paper pattern Patent Number : 63248



Massage equipment Patent Number : 64677



Box Patent Number : 63249



Lamp Patent Number : 64356



Lamp Patent Number: 64357

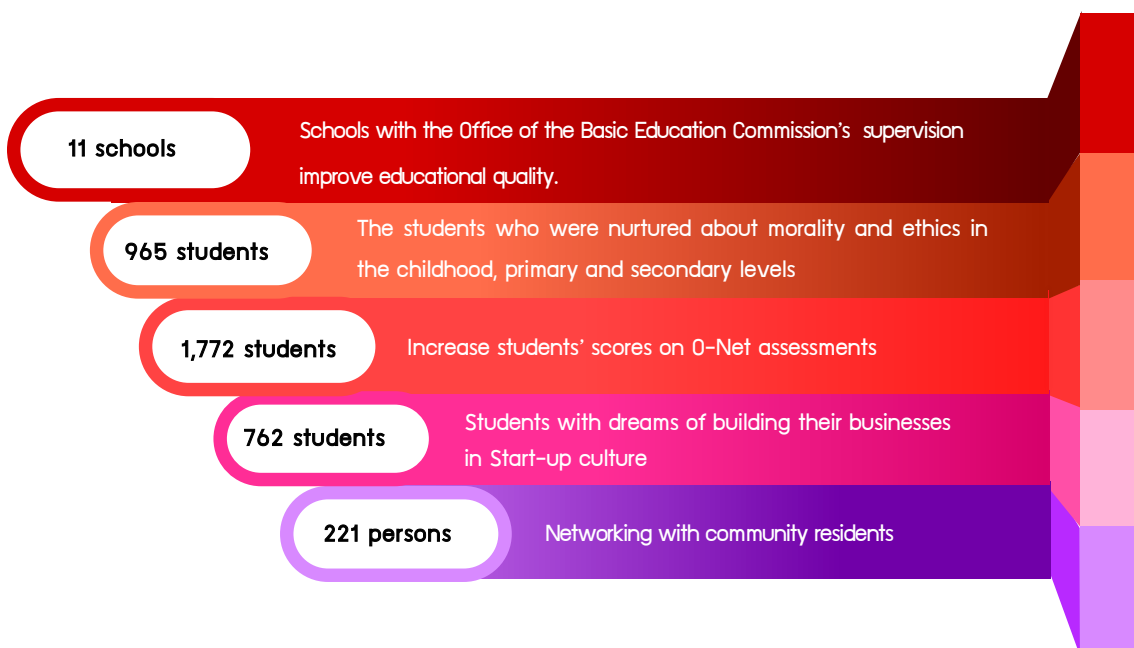
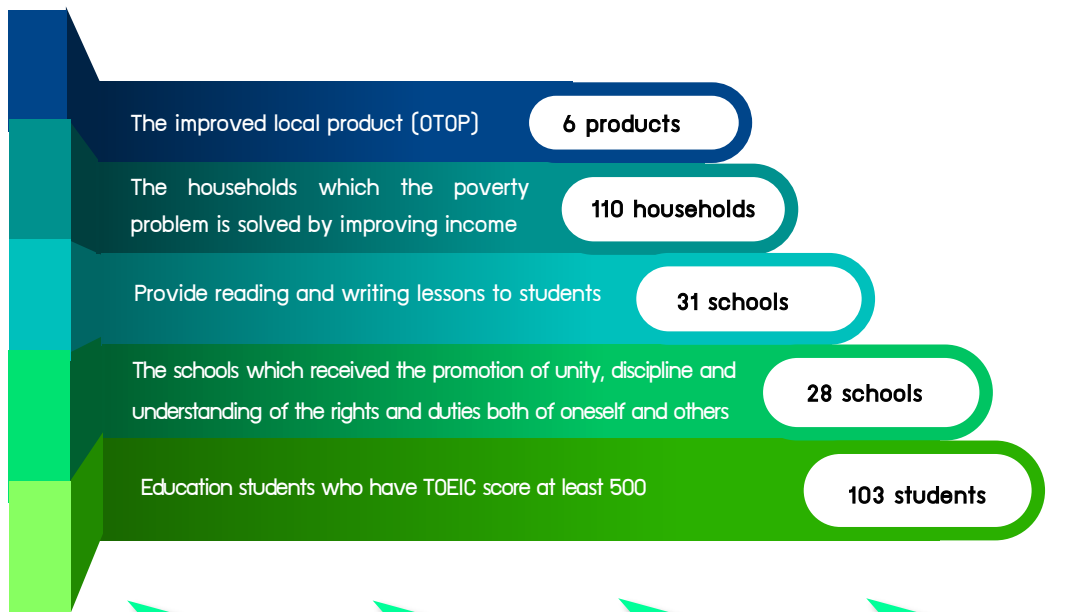
Source : Institute of Research and Development

Data : Fiscal Year 2019, September 2019



### 3.3 Rajabhat University Strategy

#### 3.3.1 Rajabhat University Strategic Project for Local Development



### 3.3.2 New knowledge at the academic resources



Source : Institute of Research and Development

Data : Fiscal Year 2019, September 2019

### 3.4 The Arts and Culture Preservation

#### 3.4.1 H.H. Princess Saisavali Bhiromya Exhibition Hall and 3 Silapa Rattanakosin Resource Center

Saisavali Bhiromya Building



Chudaratnabhorn Building (Music)



Adorn Dibyanivasa Building (Art)



Auan-achava Dhamdhawalaya Building (Classical dance)



21,922 visitors

Source : The Office of Arts and Culture, Suan Sunandha Rajabhat University  
Data : Fiscal year 2019, September 2019



### 3.4.2 The Preservation and Dissemination of Arts and Culture

Preserving arts and  
culture



Restoring Suan  
Sunandha's uniqueness

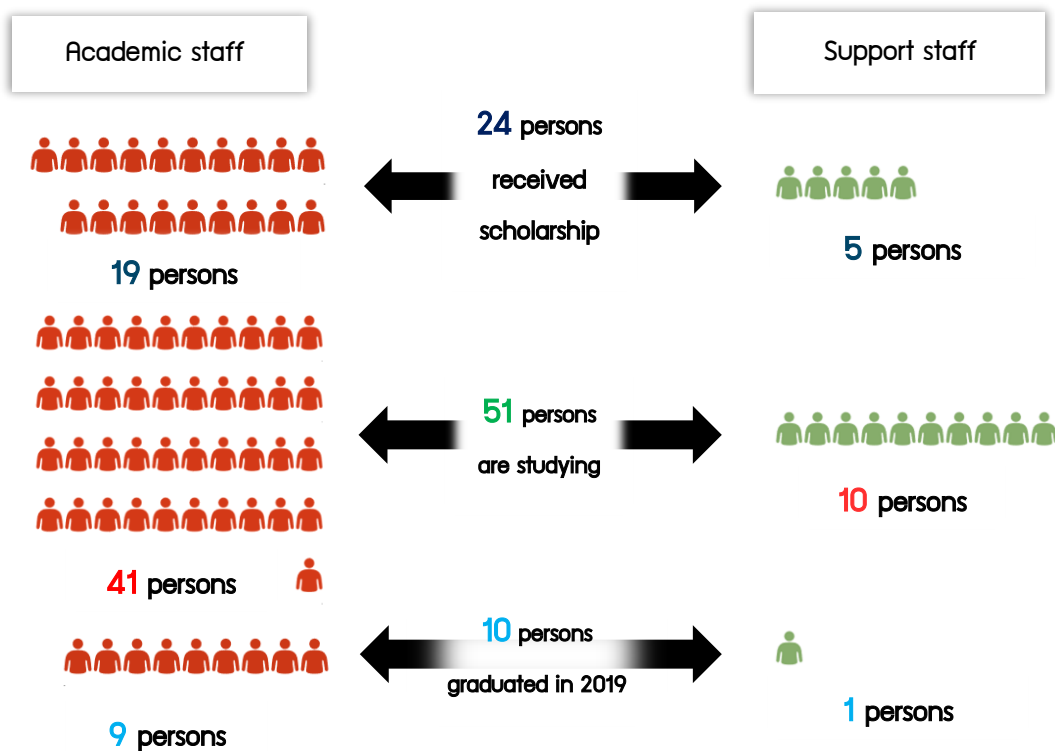
Preservation and study  
on Suan Sunandha's  
uniqueness and identity



Arts and culture  
cooperation and  
dissemination

### 3.5 Administration

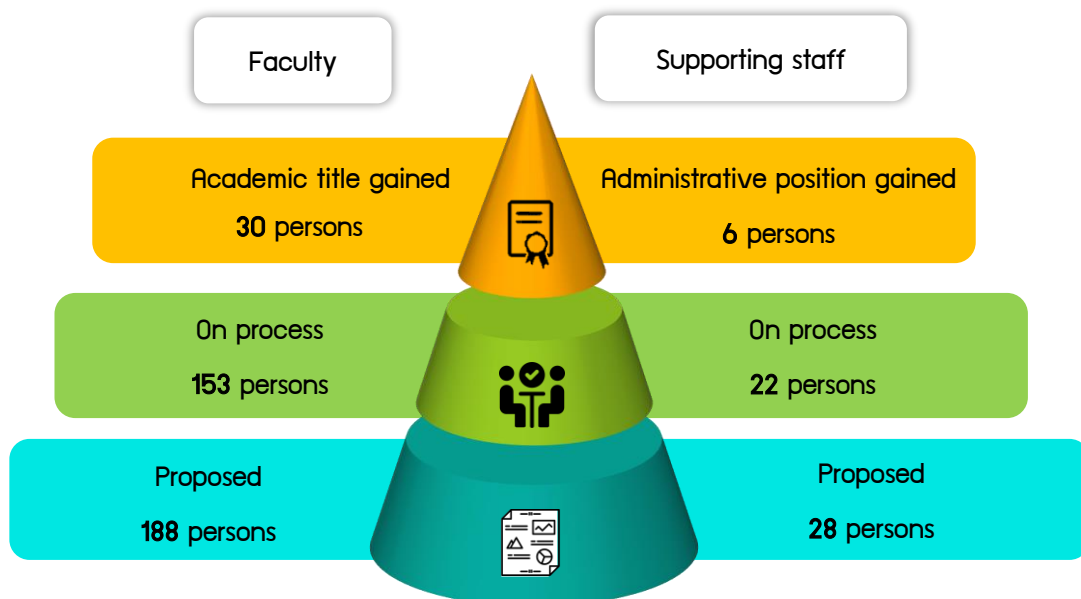
#### 3.5.1 Continuing their education



Source : Office of the President, Personnel Administration Division

Data: Fiscal Year 2019, September 2019

#### 3.5.2 Personnel and staff development



Source : Office of the President, Personnel Administration Division

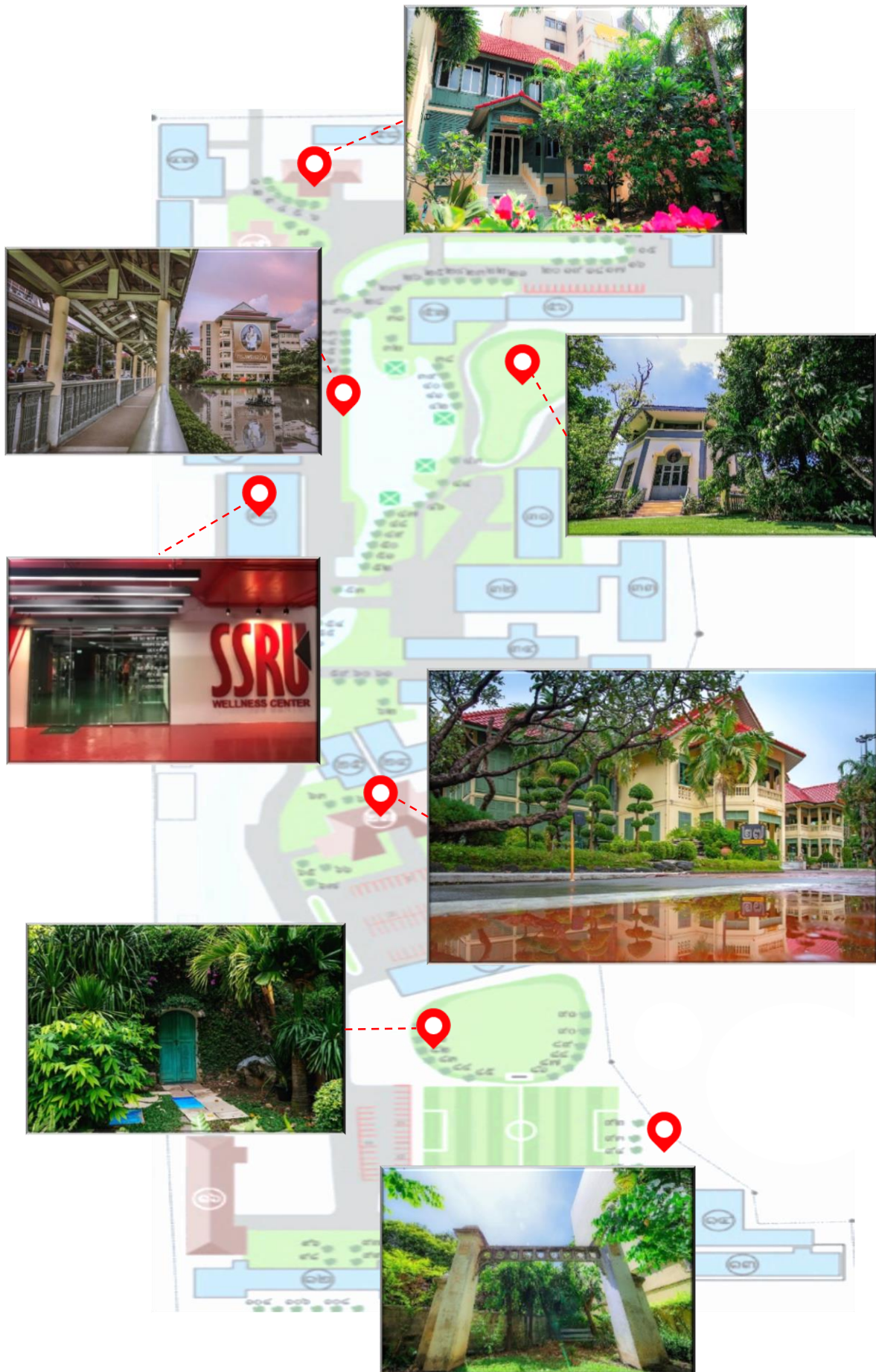
Data: Fiscal Year 2019, September 2019

### 3.5.3 Staff happiness





### 3.5.4 Landscape and Environmental Improvement





### 3.5.5 Identity of Suan Sunandha



Concentrate on Royal-related  
transcendence

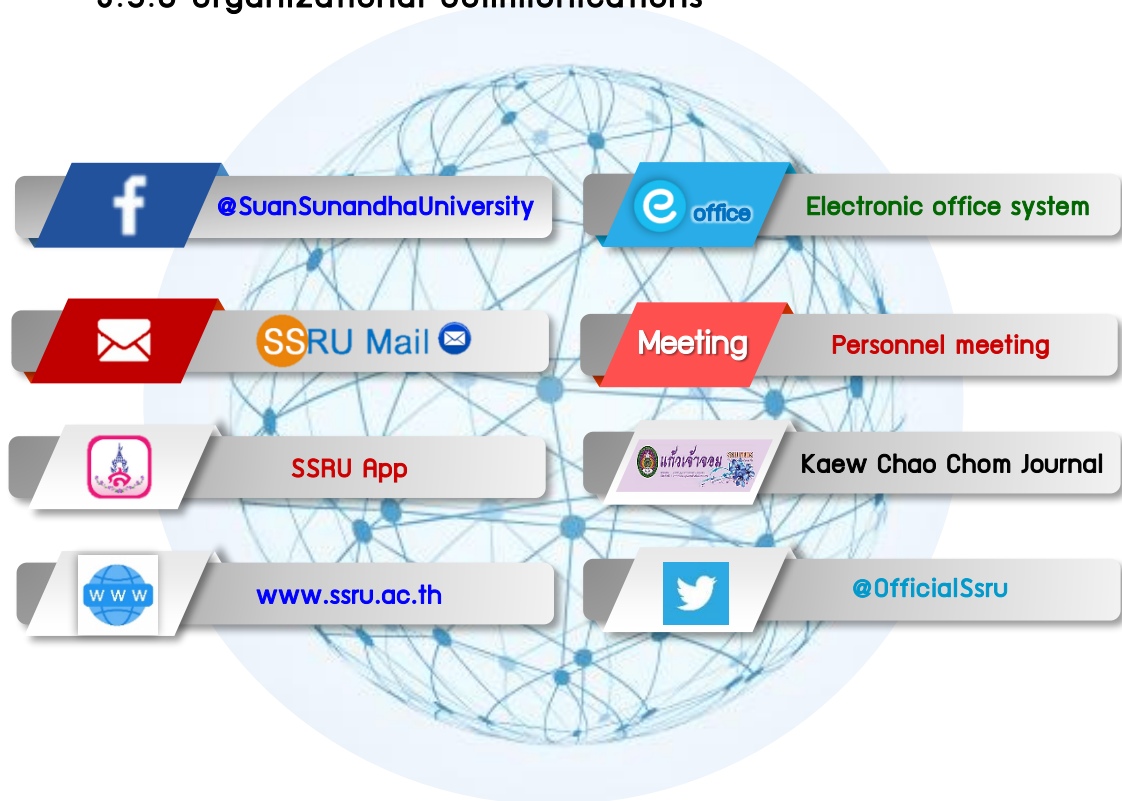


Turn into an international  
learning organization





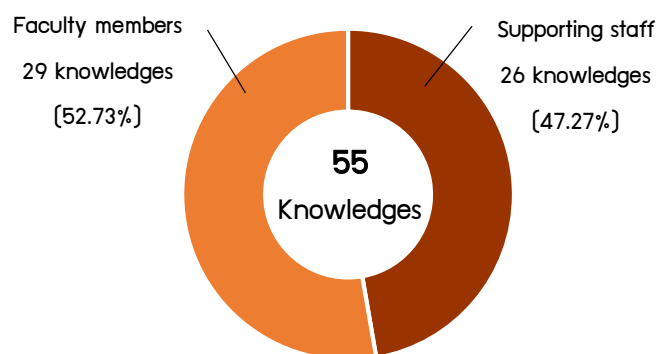
### 3.5.6 Organizational Communications



### 3.5.7 English Potentiality Development for Staff



### 3.5.8 KM outcome



Source : Office of the President, Policy and Planning Division

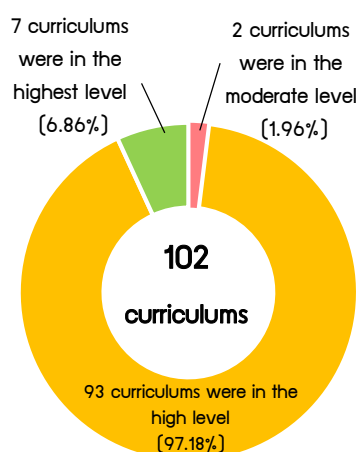
Data : Fiscal Year 2019, September 2019





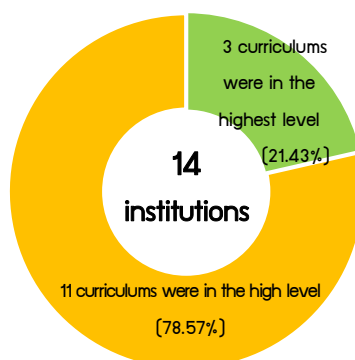


### 3.5.9 Result of Internal Education Quality Assessment in Curriculum/Faculty/University



\* Bachelor of Nursing which was assessed by Thailand Nursing and Midwifery Council

**Curriculum Level**



**Faculty**



**University Level**

Source : Office of the President, Policy and Planning Division  
Data : Educational Year 2018, July 2019

### 3.5.10 External Audit Evaluation Outcome: 4th, Higher Education Level



Instruct and welcome the delegates of external quality assurance in the higher education



Being the archetype and good practices for the other departments



Source : Office of the President, Policy and Planning Division

Data : Fiscal Year 2019, September 2019

### 3.5.11 Integrity and Transparency Assessment of Government Agencies



score  
90.45

Level **A**  
Highest

Source : Office of the President, Policy and Planning Division

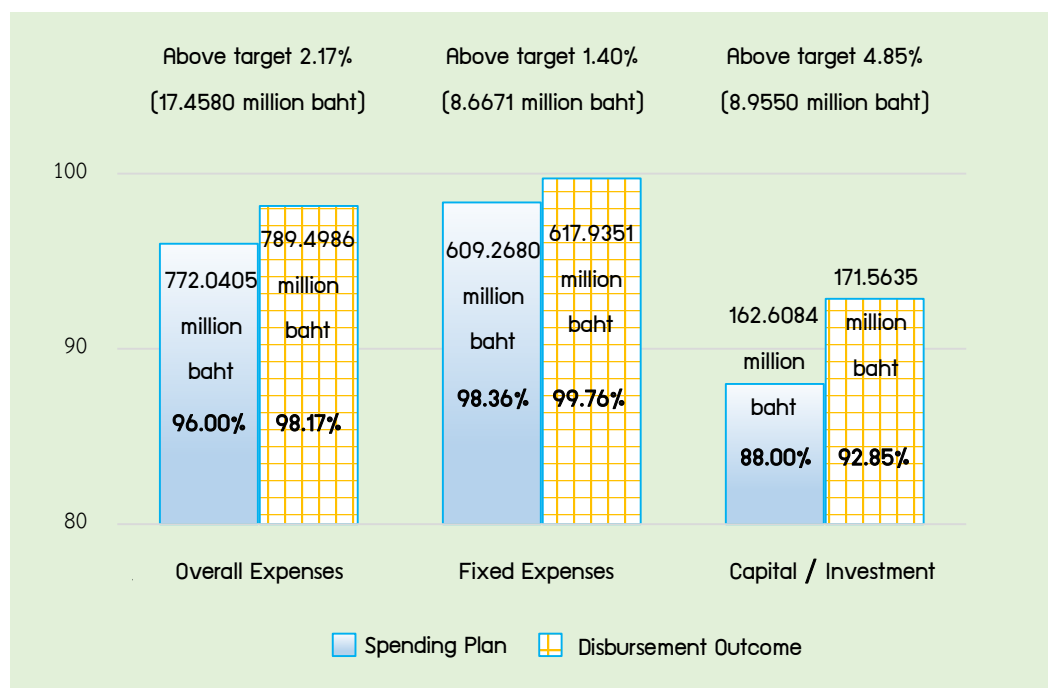
Data : Fiscal Year 2019, September 2019



### 3.5.12 University Ranking



### 3.5.13 Government Budget Disbursement



Source : Office of the President, Policy and Planning Division  
Data : Fiscal Year 2019, September 2019

### 3.5.14 Education Service Center Development

#### Good Landscape and Environment



#### Online Meeting



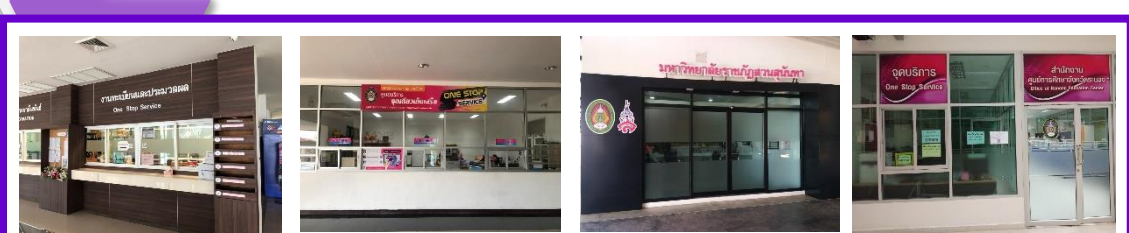
#### Network Establishment



#### Student Application



#### One stop service





## Advisors

Assoc. Prof. Dr. Luedech Girdwichai	President of Suan Sunandha Rajabhat University
Assoc. Prof. Dr. Witthaya Mekhum	Vice President for Planning and Quality Assurance

## Data Sources

Faculty of Education	International College
Faculty of Science and Technology	College of Innovation and Management
Faculty of Humanities and Social Science	College of Nursing and Health
Faculty of Management Science	College of Allied Health Science
Faculty of Industrial Technology	International School of Art
Faculty of Fine and Applied Arts	College of Logistics and Supply Chain
Graduate School	College of Architecture
Office of the President	Office of General Education and Innovative Electronic Learning (GE)
Office of Arts and Culture	Institute of Lifelong Learning and Promote Creativity (ILPC)
Institute of Research and Development	Academic Resource and Information Technology (ARIT)
Nakhon Pathom Education Center	SSRU Demonstration School
Udon Thani Education Center	Samut Songkhram Education Center
Ranong Education Center	

## Authors

Mr. Sontaya	Jarernsiri	Director of Policy and Planning Division
Ms. Pumpuang	Klaharn	Head of Budget and Information Monitoring Section
Mr. Phibool	Phumuang	Head of Quality Assurance and Knowledge Management Section
Ms. Wanassanath	Prapala	Head of Job System and Performance Assessment Development Section
Miss. Prangthip	Keteklin	Head of Plan and Budget Section
Acting Sub Lt. Kanisorn	Boonrueng	Acting-Head, Administration Section
Ms. Warangkana	Sirihongthong	Policy and Planning Analyst
Mr. Jamrat	Nimsamran	Policy and Planning Analyst
Mr. Kittipat	Bualek	Policy and Planning Analyst
Acting Sub Lt. Ratchata	Suksupachai	Policy and Planning Analyst
Mr. Prapol	Suksuchom	General Administrative Officer







Planing and Policy division Office of President  
Suan Sunandha Rajabhat University  
[www.plan.ssrु.ac.th](http://www.plan.ssrु.ac.th)